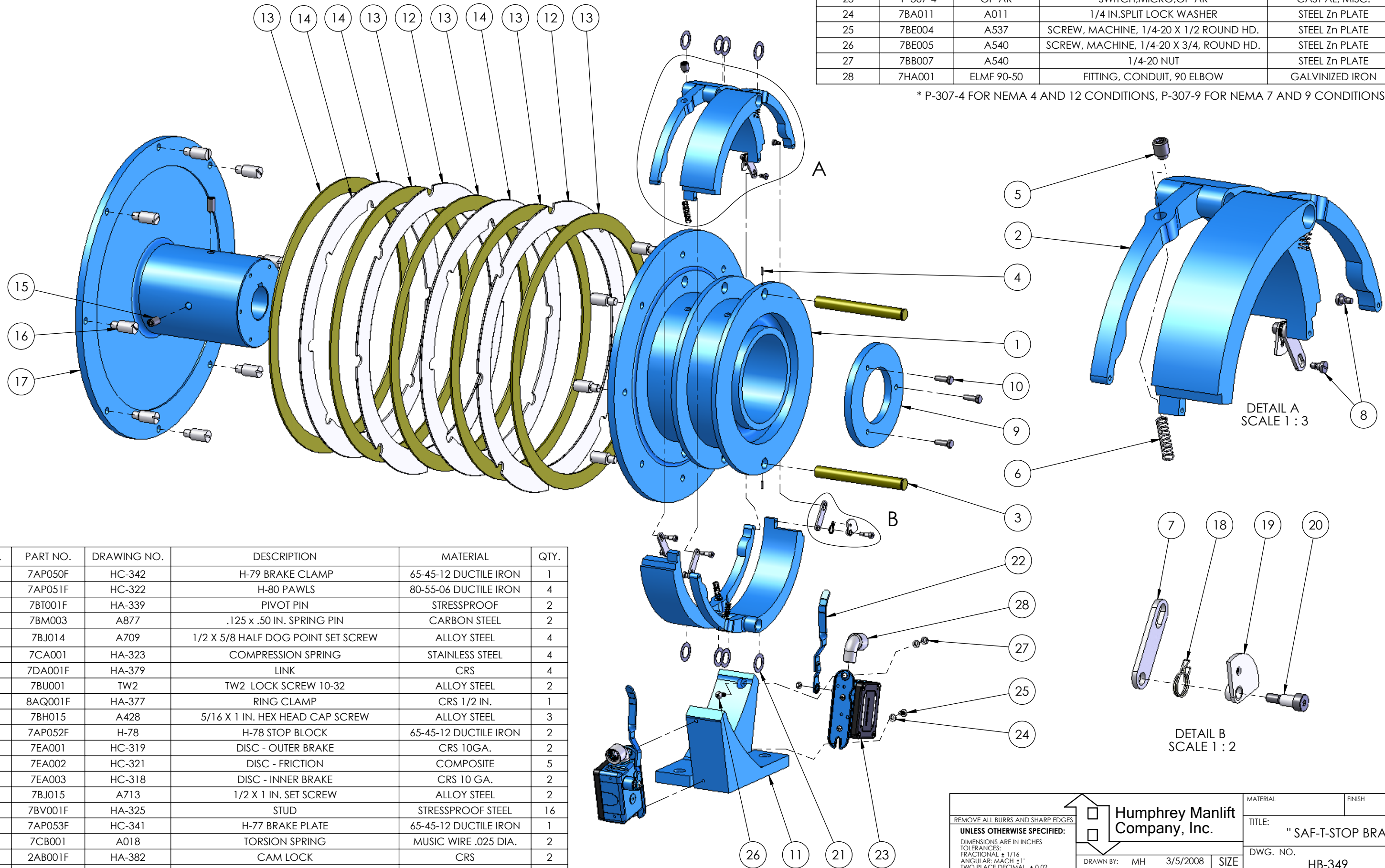


PART NO: SAH-15

ITEM NO.	PART NO.	DRAWING NO.	DESCRIPTION	MATERIAL	QTY.
22	2AC001A	HB-393	SWITCH TRIP ARM	HRS	1
23	*P-307-4	OP-AR	SWITCH,MICRO,OP-AR	CAST AL, MISC.	1
24	7BA011	A011	1/4 IN.SPLIT LOCK WASHER	STEEL Zn PLATE	2
25	7BE004	A537	SCREW, MACHINE, 1/4-20 X 1/2 ROUND HD.	STEEL Zn PLATE	1
26	7BE005	A540	SCREW, MACHINE, 1/4-20 X 3/4, ROUND HD.	STEEL Zn PLATE	1
27	7BB007	A540	1/4-20 NUT	STEEL Zn PLATE	1
28	7HA001	ELMF 90-50	FITTING, CONDUIT, 90 ELBOW	GALVINIZED IRON	1

\* P-307-4 FOR NEMA 4 AND 12 CONDITIONS, P-307-9 FOR NEMA 7 AND 9 CONDITIONS




ITEM NO.	PART NO.	DRAWING NO.	DESCRIPTION	MATERIAL	QTY.
1	7AP050F	HC-342	H-79 BRAKE CLAMP	65-45-12 DUCTILE IRON	1
2	7AP051F	HC-322	H-80 PAWLS	80-55-06 DUCTILE IRON	4
3	7BT001F	HA-339	PIVOT PIN	STRESSPROOF	2
4	7BM003	A877	.125 x .50 IN. SPRING PIN	CARBON STEEL	2
5	7BJ014	A709	1/2 X 5/8 HALF DOG POINT SET SCREW	ALLOY STEEL	4
6	7CA001	HA-323	COMPRESSION SPRING	STAINLESS STEEL	4
7	7DA001F	HA-379	LINK	CRS	4
8	7BU001	TW2	TW2 LOCK SCREW 10-32	ALLOY STEEL	2
9	8AQ001F	HA-377	RING CLAMP	CRS 1/2 IN.	1
10	7BH015	A428	5/16 X 1 IN. HEX HEAD CAP SCREW	ALLOY STEEL	3
11	7AP052F	H-78	H-78 STOP BLOCK	65-45-12 DUCTILE IRON	2
12	7EA001	HC-319	DISC - OUTER BRAKE	CRS 10GA.	2
13	7EA002	HC-321	DISC - FRICTION	COMPOSITE	5
14	7EA003	HC-318	DISC - INNER BRAKE	CRS 10 GA.	2
15	7BJ015	A713	1/2 X 1 IN. SET SCREW	ALLOY STEEL	2
16	7BV001F	HA-325	STUD	STRESSPROOF STEEL	16
17	7AP053F	HC-341	H-77 BRAKE PLATE	65-45-12 DUCTILE IRON	1
18	7CB001	A018	TORSION SPRING	MUSIC WIRE .025 DIA.	2
19	2AB001F	HA-382	CAM LOCK	CRS	2
20	7BW001	A535	1/4 X 3/8 IN. STRIPPER BOLT 10-24	ALLOY STEEL	6
21	7BA019	A019	SHIM WASHER	ALLOY STEEL	8

<p>REMOVE ALL BURRS AND SHARP EDGES</p> <p><b>UNLESS OTHERWISE SPECIFIED:</b></p> <p>DIMENSIONS ARE IN INCHES</p> <p>TOLERANCES:</p> <p>FRACTIONAL: ± 1/16</p> <p>ANGULAR: MACH ± 1°</p> <p>TWO PLACE DECIMAL: ± 0.02</p> <p>THREE PLACE DECIMAL: ± 0.005</p> <p><b>DO NOT SCALE THIS DRAWING</b></p>		<p><b>Humphrey Manlift Company, Inc.</b></p> <p>DRAWN BY: MH 3/5/2008</p> <p>CHECKED</p> <p>ENG APPR.</p>		<p>MATERIAL</p> <p>FINISH</p> <p>TITLE: "SAF-T-STOP BRAKE"</p> <p>DWG. NO. HB-349</p> <p>SCALE: 1:6 WT: 295.6</p>		<p>REV</p> <p>SIZE B</p> <p>SHEET 1 OF 2</p>	
---	--	---	--	---	--	--	--

ITEM NO.	PART NO.	PART NUMBER	DESCRIPTION	MATERIAL	QTY.
1	7AP050F	HC-342	H-79 BRAKE CLAMP	65-45-12 DUCTILE IRON	1
2	7AP051F	HC-322	H-80 PAWLS	80-55-06 DUCTILE IRON	4
3	7BT001F	HA-339	PIVOT PIN	STRESSPROOF	2
4	7BM003	A877	.125 x .50 IN. SPRING PIN	CARBON STEEL	2
5	7BJ014	A709	1/2 X 5/8 HALF DOG POINT SET SCREW	ALLOY STEEL	4
6	7CA001	HA-323	COMPRESSION SPRING	STAINLESS STEEL	4
7	7DA001F	HA-379	LINK	CRS	4
8	7BU001	TW2	TW2 LOCK SCREW 10-32	ALLOY STEEL	2
9	8AQ001F	HA-377	RING CLAMP	CRS 1/2 IN.	1
10	7BH015	A428	5/16 X 1 IN. HEX HEAD CAP SCREW	ALLOY STEEL	3
11	7AP052F	H-78	H-78 STOP BLOCK	65-45-12 DUCTILE IRON	2
12	7EA001	HC-319	DISC - OUTER BRAKE	CRS 10GA.	2
13	7EA002	HC-321	DISC - FRICTION	COMPOSITE	5
14	7EA003	HC-318	DISC - INNER BRAKE	CRS 10 GA.	2
15	7BJ015	A713	1/2 X 1 IN. SET SCREW	ALLOY STEEL	2
16	7BV001F	HA-325	STUD	STRESSPROOF STEEL	16
17	7AP053F	HC-341	H-77 BRAKE PLATE	65-45-12 DUCTILE IRON	1
18	7CB001	A018	TORSION SPRING	MUSIC WIRE .025 DIA.	2
19	2AB001F	HA-382	CAM LOCK	CRS	2
20	7BW001	A535	1/4 X 3/8 IN. STRIPPER BOLT 10-24	ALLOY STEEL	6
21	7BA019	A019	SHIM WASHER	ALLOY STEEL	8
22	2AC001A	HB-393	SWITCH TRIP ARM	HRS	1
23	*P-307-4	OP-AR	SWITCH,MICRO,OP-AR	CAST AL, MISC.	1
24	7BA011	A011	1/4 IN.SPLIT LOCK WASHER	STEEL Zn PLATE	2
25	7BE004	A537	SCREW, MACHINE, 1/4-20 X 1/2 ROUND HD.	STEEL Zn PLATE	1
26	7BE005	A540	SCREW, MACHINE, 1/4-20 X 3/4, ROUND HD.	STEEL Zn PLATE	1
27	7BB007	A540	1/4-20 NUT	STEEL Zn PLATE	1
28	7HA001	ELMF 90-50	FITTING, CONDUIT, 90 ELBOW	GALVINIZED IRON	1

\* P-307-4 FOR NEMA 4 AND 12 CONDITIONS, P-307-9 FOR NEMA 7 AND 9 CONDITIONS

REMOVE ALL BURRS AND SHARP EDGES <b>UNLESS OTHERWISE SPECIFIED:</b> DIMENSIONS ARE IN INCHES FRACTIONAL $\pm 1/16$ ANGULAR: MACH $\pm 1'$ TWO PLACE DECIMAL $\pm 0.02$ THREE PLACE DECIMAL $\pm 0.005$				MATERIAL	FINISH
<b>DO NOT SCALE THIS DRAWING</b>		DRAWN BY: MH 3/5/2008 CHECKED ENG APPR.		TITLE: " SAF-T-STOP BRAKE "	
		SIZE <b>A</b>		DWG. NO. HB-349 REV	
				SCALE: 1:24	WT: 295.6
				SHEET 2 OF 2	